

Floating Wind

for the

Celtic Sea

SBE1 (Blue Gem Wind) Presentation Cornwall Marine I Flow Webinar

15th May 2020 (Hugh Kelly / David Jones)

Simply Blue Energy

As a leading Blue Economy Developer, Simply Blue Energy will sustainably harvest resources from our oceans for a better world.

Presence

- Founded 2011
- Current team of 15 and actively recruiting
- Offices in Ireland, Edinburgh, Cornwall and Pembroke

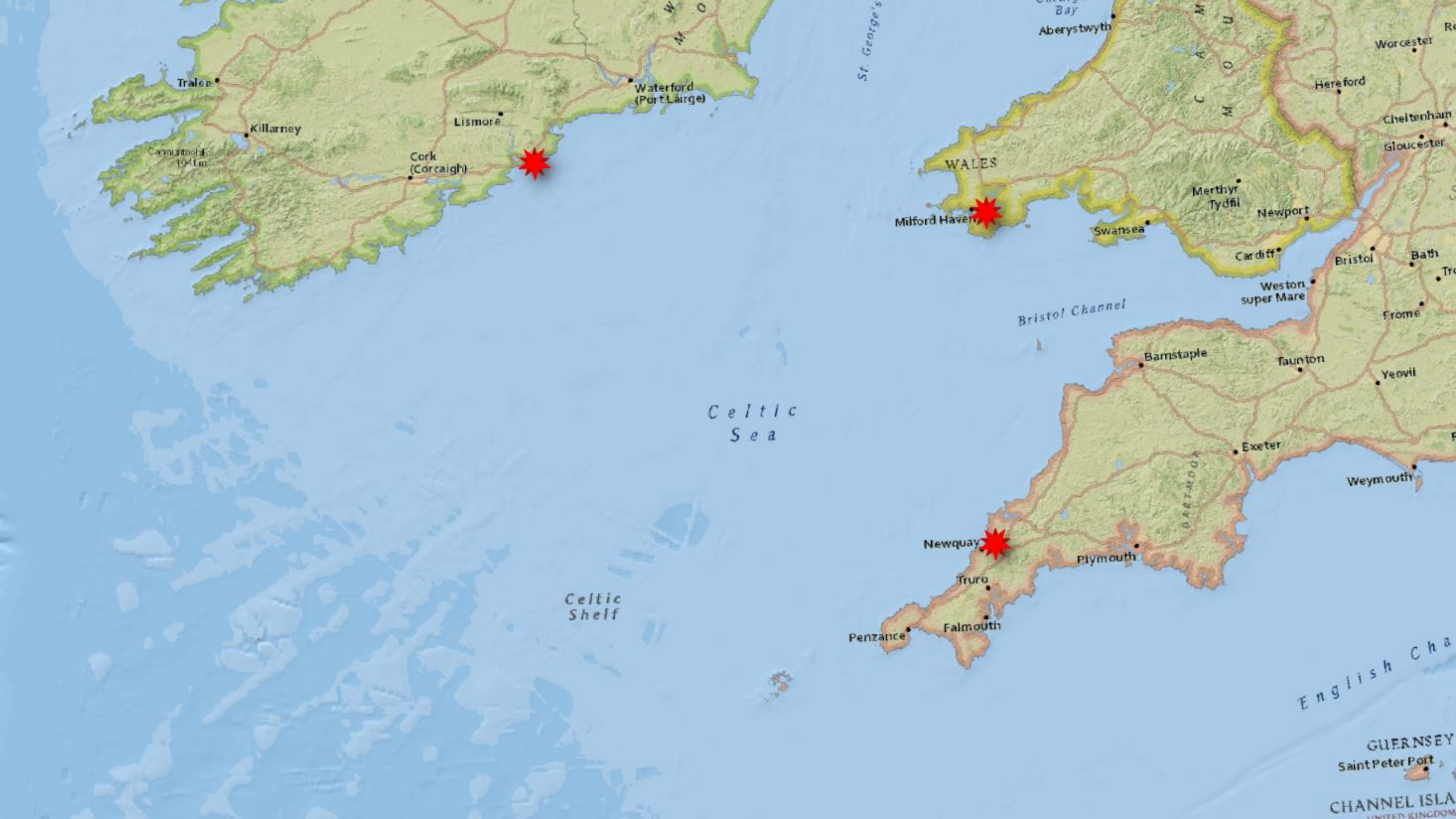
Focus

- Relationship with Principle Power for UK and Irish sites
- WAVE with CorPower AB (Sweden) for SW UK & Irish sites
- Aquaculture – Semi-closed loop systems

Experience

- Entrepreneurial and Developer led approach
- Highly experienced Board, across range of sectors, including Maritime & Shipping
- Over 100 years of combined development experience
- Relationship with Green Giraffe





FLOW for the Celtic Sea

Celtic Sea

Opportunity & Capacity

ZONE ID	AREA [km ²]	CAPACITY DENSITY 1 [MW/KM ²]	CAPACITY DENSITY 2 [MW/KM ²]	CAPACITY DENSITY 3 [MW/KM ²]	CAPACITY 1 [MW]	CAPACITY 2 [MW]	CAPACITY 3 [MW]
1	385	3	4	5	1,157	1,542	1,928
2	7,148	3	4	5	21,445	28,594	35,743
3	1,081	3	4	5	3,243	4,324	5,406
4	143	3	4	5	431	575	719
5	4,975	3	4	5	14,927	19,903	24,879
6	7,355	3	4	5	22,066	29,422	36,777
7	1,997	3	4	5	5,991	7,988	9,985
8	340	3	4	5	1,020	1,361	1,701
9	9,500	3	4	5	28,502	38,003	47,504
10	17,380	3	4	5	52,140	69,520	86,900
Aggregate Potential Capacity [MW]					150,926	201,235	251,544
Aggregate Potential Capacity [GW]					151	201	252

Up to 20% (50GW) realisable

Ref. ITP Energised Report - commissioned by SBE

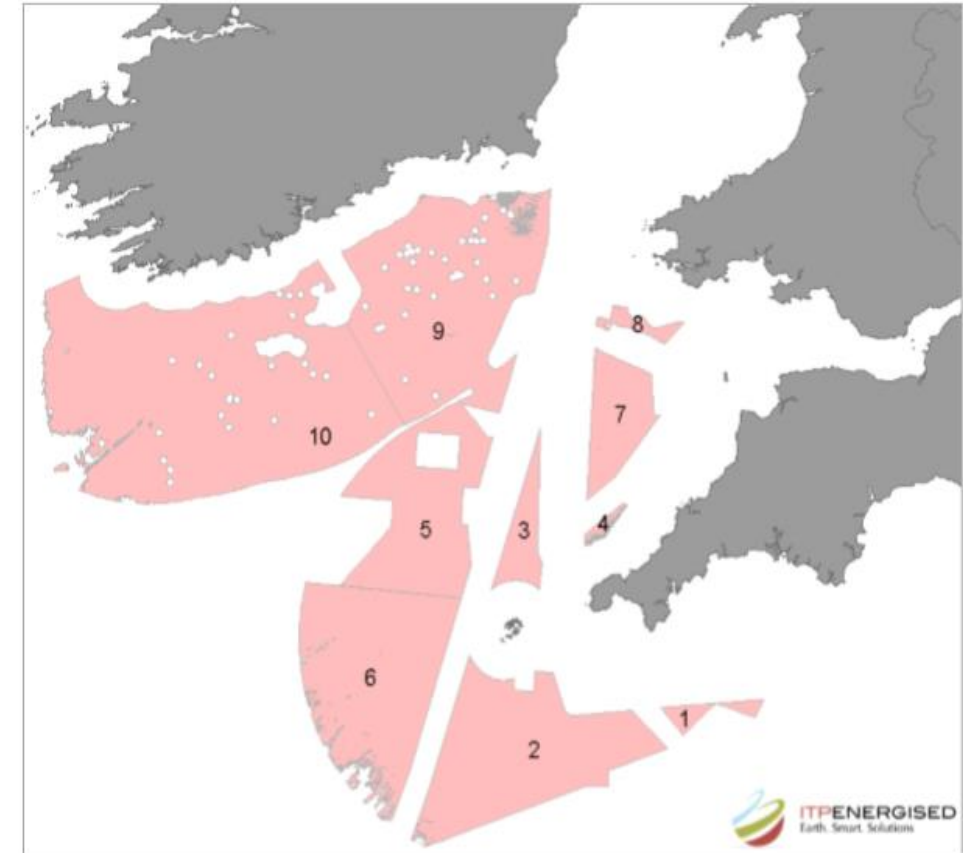


Figure 4.1 Zones of potential in the Celtic Sea.

FLOW for the Celtic Sea

Stepping-stone Approach

- Stepping-stone Strategy to allow development of indigenous supply chain
 - 96MW demonstration (Erebus)
 - A further project in-line stepping-stone (larger scale)?
- Leading to >500MW Commercial
- Wider opportunities in the Celtic Sea
- Other developers will follow



Picture: Installation of 3rd Blade, Portugal (Dec 2019)

FLOW for the Celtic Sea

Success through Partnerships and
Collaboration

- March 2020
- Simply Blue Energy + Total New Technologies announced a Joint Venture:



Blue Gem Wind

- Project Erebus (c.96 MW)
- Project 2?



+



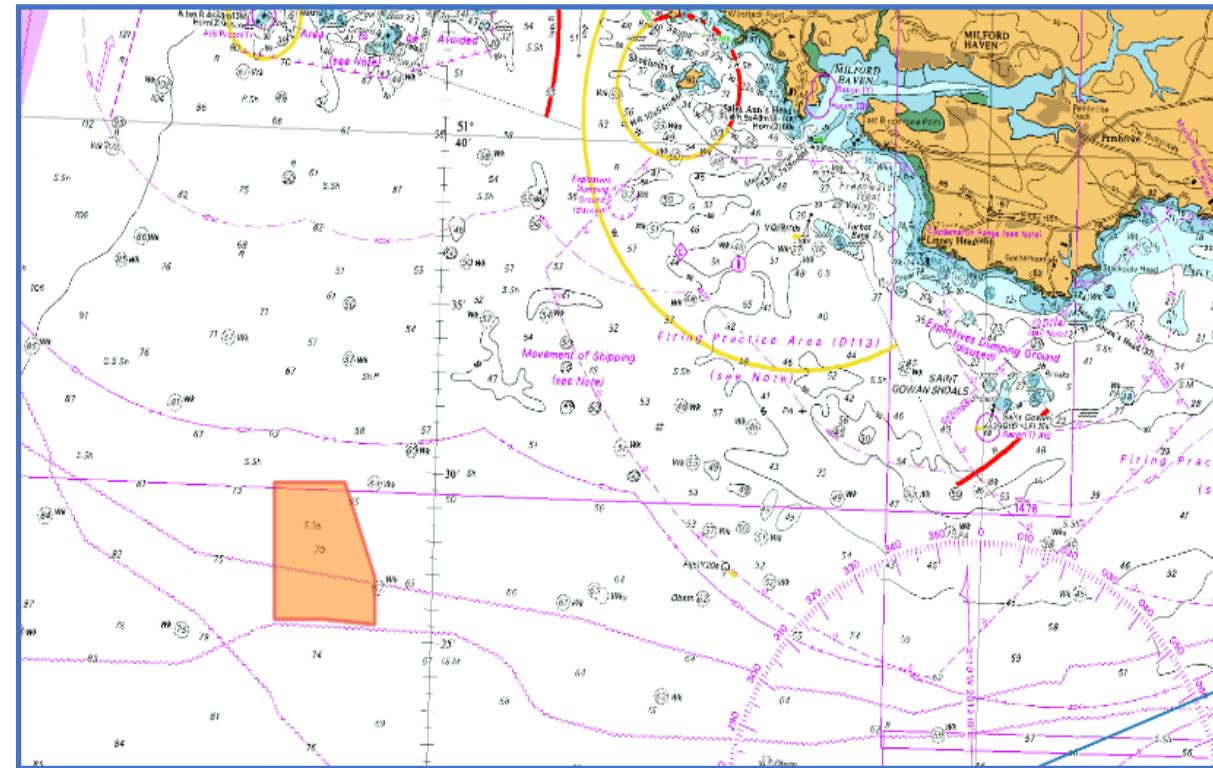
Project Erebus

Part of the Blue Gem Wind Portfolio

- Supply Chain Plan – Q1 2023
- Detailed Supply Positions – Q4 2024
- Order Start Q4 2024



Blue Gem Wind





Blue Gem Portfolio

Supply Chain Opportunities

- Project Offices in Newquay and Pembroke Dock
- Supporting regional/cross border initiatives CSA CSC / MEW / Cornwall Marine Network
- Supported Cornwall / Wales OREC supply chain study / events / workshops
- Supported CIOs LEP with Ministerial submission



Blue Gem Wind

Picture: WindFloat Atlantic Fabrication for Kincardine

Blue Gem Portfolio

Supply Chain Opportunities

- Supporting PDM / MH:EK project and SWIC
- Ports Study to build engagement, understanding stimulate upgrades
- Commissioned work at Celtic Sea level - Resource / System Benefits
- Awarded development contracts to SW SMEs



Blue Gem Wind



Blue Gem Portfolio

Supply Chain Opportunities

- Development agency workshop with Welsh Gov, Cornwall LEP, CDC, OREC, PCC
- Project Development
- Manufacturing – Components / Fabrication
- Assembly
- Deployment / O&M



Blue Gem Wind



Blue Gem Portfolio

Supply Chain Opportunities

Next Steps

- Collaboration is key to maximise SC opps
- Celtic Sea Cluster / CSA
- UK Content 60% 2030 – Development pathway/
pipeline of projects = Erebus is just the beginning
- SHE and Supply Chain Plan
- RTM / Celtic Sea Leasing Round / CfD



Blue Gem Wind



Thank you & Questions



Blue Gem Wind